



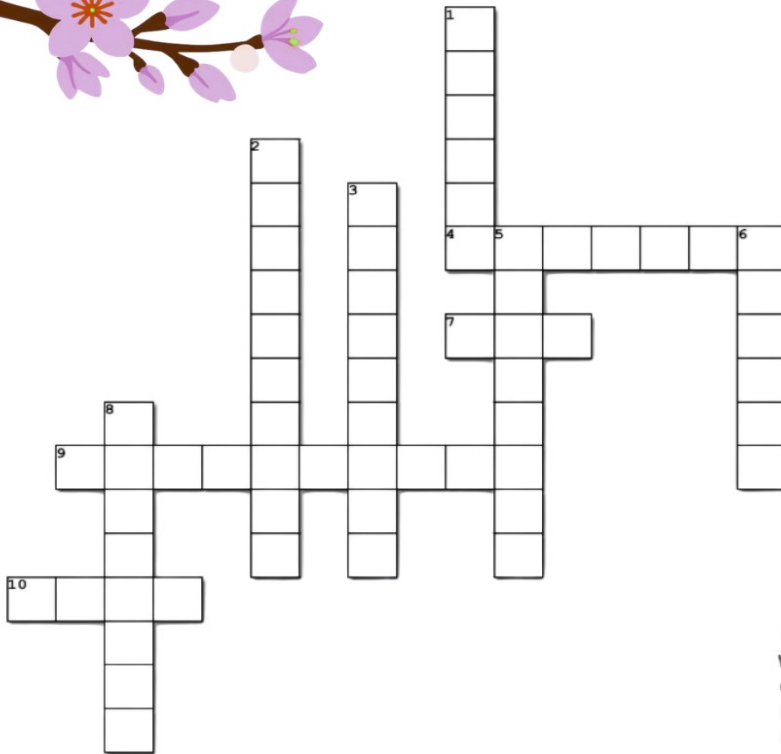
Est. 1970

MELNA

Maine Landscape & Nursery Association



CROSSWORD



Across

- 4. April _____
- 7. _____ flowers
- 9. A mischievous, Irish, fairy-like creature
- 10. Easter _____

Down

- 1. Don't forget your gardening _____
- 2. A late-spring fern popular for eating
- 3. A common yellow flowering spring shrub
- 5. A popular spring bulb
- 6. Spring has _____
- 8. A young plant that has just sprouted from seed

WORD SCRAMBLE

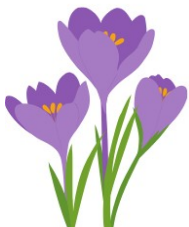
CARSSIUNS
 TOPSMOC
 LETIGMN
 LAPERHMPE
 NEGAADIR

WORD SEARCH

```

M H V           U Q X
T R T C Y K     W W O K U J
P A X U Y F Y M I   Z D U F P D J D M
W A H O B X V O U   K N G Y X D K H A
G Y Y X O D Z E W O   T X M R R U O G H N
D Y J M N F Z I P H   E E J E C X U J V U
B U A C I U I D H H F   U B J H N G N K G U L
Y Z V Q W B F X Z D M X C N J N R L P A U A
X M H L Z O B I Y S J S E G S L L D J U
H Q U U I L Y K M Q M U U N I
Z N L U M D U Q R
G A M P S K N U I D T Q H
S B P Z M A G N O L I A K R E
E G C R R M O I N O U L C Y P S J Z H
M E M M V I U K N P I I N E H O Z G I L I
L P I P C L E A N U P S P N X L S F E S I
I P E V J V R P J T Z T O P T H Y Y L Y U Y R
H Z J N X S P W H   E A I   R Q S D V B Z W R
T Y D P A A A D A   N E T   A I A E C J C G X
X D L S M N L H     M Q O     E N I U K E Y E
W W J M E X W     U L D     D G O T M O A
A O F H N         Z Z D     Y H N U G
I U V           X D D     V J S
J O O
N D M
  
```

APRIL CLEANUPS DICENTRA MAGNOLIA
 MUD MULCH POLYSAND SPRING SQUILL



Let's have some puzzle fun!
 Printable pdf can be found at www.melna.org
 -Jason & Kristin White + Katey Campbell

WORD SCRAMBLE

CARSSIUNS NARCISSUS
TOPSMOC COMPOST
LETIGMN MELTING
LAPERHMPE EPHEMERAL
NEGAADIR DRAINAGE

Across

- | | |
|--|------------|
| 4. April _____ | Showers |
| 7. _____ flowers | May |
| 9. A mischievous, Irish, fairy-like creature | Leprechaun |
| 10. Easter _____ | Lily |

Down

- | | |
|---|------------|
| 1. Don't forget your gardening _____ | Gloves |
| 2. A late-spring fern popular for eating | Fiddlehead |
| 3. A common yellow flowering spring shrub | Forsythia |
| 5. A popular spring bulb | Hyacinth |
| 6. Spring has _____ | Sprung |
| 8. A young plant that has just sprouted from seed | Seedling |